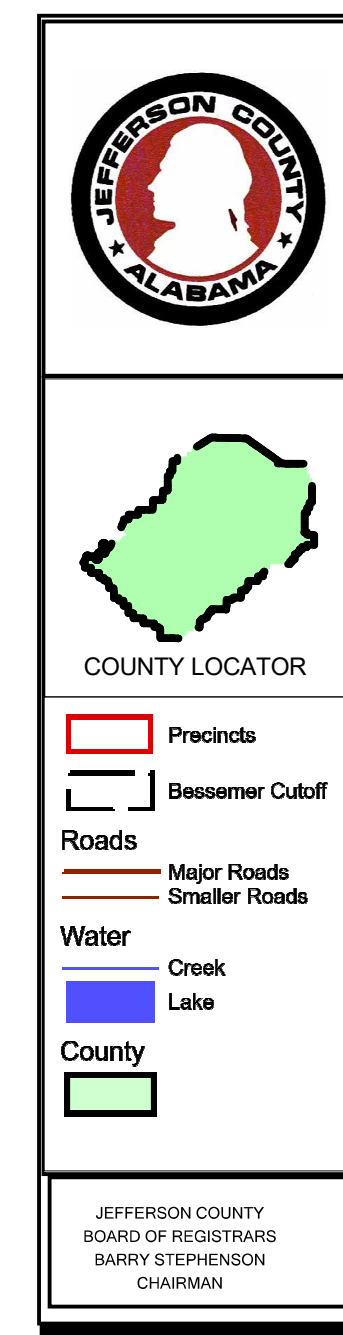
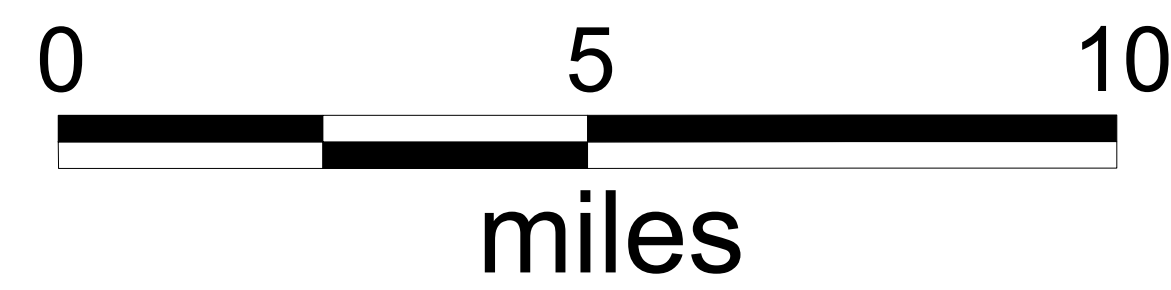
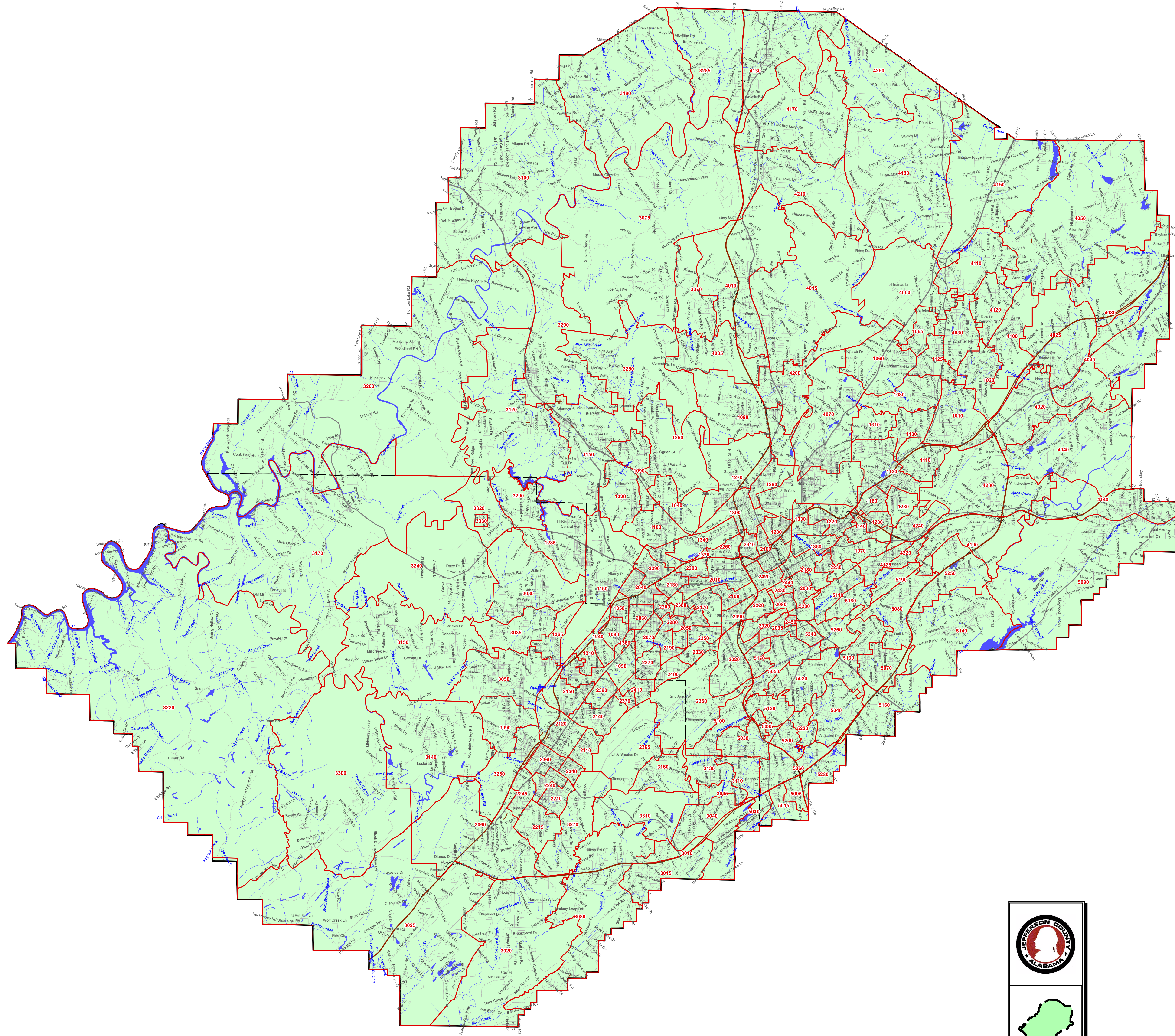


Jefferson County Precincts



- PREC 1010 - HUFFMAN BAPTIST CHURCH
- PREC 1020 - TOM BRADFORD PARK
- PREC 1030 - L.M. SMITH MIDDLE SCHOOL
- PREC 1040 - BETHEL BAPTIST CHURCH
- PREC 1050 - MIDFIELD COMMUNITY CENTER
- PREC 1060 - SUN VALLEY ELEMENTARY SCHOOL
- PREC 1065/4060 - CENTER POINT COMMUNITY
- PREC 1070 - CRESTWAY BAPTIST CHURCH
- PREC 1080 - MILES COLLEGE GYM
- PREC 1090 - FORESTDALE SQUARE
- PREC 1100 - SOUTH HAMPTON ELEMENTARY
- PREC 1110 - DON HAWKINS PARK &
- PREC 1120 - ROBINSON ELEMENTARY SCHOOL
- PREC 1125 - CENTER POINT SENIOR CENTER
- PREC 1130 - MARTHA GASKINS ELEMENTARY
- PREC 1140 - THE GIRLS INC BUILDING
- PREC 1150 - ADAMSVILLE SENIOR CENTER
- PREC 1160 - FAITH CHAPEL CHRISTIAN
- PREC 1170 - HUDSON MIDDLE SCHOOL
- PREC 1180 - BARRETT ELEMENTARY SCHOOL
- PREC 1190 - INGLENOKK ELEMENTARY SCHOOL
- PREC 1200 - NORWOOD COMMUNITY CENTER
- PREC 1210 - GLEN OAKS ELEMENTARY SCHOOL
- PREC 1220 - WILLOW WOOD RECREATION
- PREC 1230 - NEW RISING STAR MISSIONARY
- PREC 1240 - MT. PILGRIM BAPTIST CHURCH
- PREC 1250 - FORESTDALE FIRE STATION
- PREC 1270 - HOOPER CITY RECREATION
- PREC 1280 - OLIVER ELEMENTARY SCHOOL
- PREC 1285 - MINOR FIRE STATION
- PREC 1290 - NORTH BIRMINGHAM RECREATION
- PREC 1300 - NORTH BIRMINGHAM PUBLIC
- PREC 1310 - BROWNSVILLE COMMUNITY CENTER
- PREC 1320 - THE SANDUSKY-HUDSON
- PREC 1330 - MORTON SIMPSON COMMUNITY
- PREC 1340 - MOUNT HEBRON BAPTIST CHURCH
- PREC 1350 - FAIRFIELD CIVIC CENTER
- PREC 1360 - NORTH AVONDALE PUBLIC
- PREC 1365 - DOLOMITE W FIELD CITY
- PREC 1370 - MCALPINE RECREATION CENTER
- PREC 1380 - ST. MARY'S CATHOLIC CHURCH
- PREC 2010 - LEGION FIELD LOBBY GATE #7
- PREC 2020 - HOMEWOOD SENIOR CENTER
- PREC 2030 - HIGHLAND PARK GOLF COURSE
- PREC 2040 - ENSLEY PARK RECREATION
- PREC 2050 - HARRISON PARK RECREATION
- PREC 2060 - CHARLES A BROWN ELEMENTARY
- PREC 2070 - CENTRAL PARK RECREATION
- PREC 2080 - RAMSAY ALTERNATIVE HIGH
- PREC 2090 - HOLY FAMILY CRISTO REY
- PREC 2095 - HOMEWOOD COMMUNITY CENTER
- PREC 2100 - MEMORIAL RECREATION CENTER
- PREC 2110 - SOUTHSIDE HOMES COMMUNITY
- PREC 2120 - DUNBAR-ABRAMS COMMUNITY
- PREC 2130 - MINOR ELEMENTARY SCHOOL
- PREC 2140 - NEW BEGINNING CHURCH OF THE
- PREC 2150 - BRIGHTON COMMUNITY CENTER
- PREC 2160 - JEFFERSON COUNTY COURTHOUSE
- PREC 2170 - HEMPHILL SCHOOL RECREATION
- PREC 2180 - AVONDALE PUBLIC LIBRARY
- PREC 2190 - WIGGINS LIBRARY &
- PREC 2200 - CENTRAL PARK ELEMENTARY
- PREC 2210 - JONESBORO ELEMENTARY SCHOOL
- PREC 2215 - GRANT STREET BAPTIST CHURCH
- PREC 2220 - GLEN IRIS ELEMENTARY SCHOOL
- PREC 2230 - AVONDALE ELEMENTARY SCHOOL
- PREC 2240 - FIRE DEPARTMENT
- PREC 2245/3060 - BESSEMER CIVIC CENTER
- PREC 2250 - MORE THAN CONQUERORS CHURCH
- PREC 2260 - WILKERSON MIDDLE SCHOOL
- PREC 2270 - MOUNT ZION MISSIONARY
- PREC 2280 - WEST END ACADEMY
- PREC 2290 - EAST ENSLEY PUBLIC LIBRARY
- PREC 2300 - BUSH HILLS ACADEMY
- PREC 2310 - MT. ZION COMMUNITY CHURCH
- PREC 2320 - UNITARIAN UNIVERSALIST
- PREC 2330 - HENRY CRUMPTON RECREATION
- PREC 2340 - THOMPSON MANOR COMMUNITY
- PREC 2350 - OXMOOR VALLEY COMMUNITY CTR
- PREC 2360 - BESSEMER RECREATION CENTER
- PREC 2365/3160 - ROSS BRIDGE WELCOME
- PREC 2370 - NEW BETHEL BAPTIST CHURCH
- PREC 2380 - FIVE POINTS WEST PUBLIC
- PREC 2390 - ROOSEVELT CITY COMMUNITY
- PREC 2400 - WENONAH HIGH SCHOOL GYM
- PREC 2410 - BRYANT CHAPEL AME CHURCH
- PREC 2420 - BELL PHYSICAL EDUCATION
- PREC 2430/2440 - SOUTHSIDE BRANCH
- PREC 2450 - AFTON LEE COMMUNITY CENTER
- PREC 3010 - HOOVER MET BASEBALL STADIUM
- PREC 3015 - HOOVER MET SPORTS COMPLEX
- PREC 3020 - OASIS OF PRAISE CHURCH
- PREC 3025 - BAPTIST CHURCH OF MCADORY
- PREC 3030 - PLEASANT GROVE FIRST
- PREC 3035 - BETHEL BAPTIST CHURCH
- PREC 3040 - PRINCE OF PEACE CATHOLIC
- PREC 3045 - BIRMINGHAM COMMUNITY CHURCH
- PREC 3050 - PLEASANT RIDGE BAPTIST
- PREC 3070 - MT. OLIVE COMMUNITY CENTER
- PREC 3075 - FIRST BAPTIST CHURCH OF MT.
- PREC 3080 - THE STATION CHURCH
- PREC 3090 - BROOKLANE COMMUNITY CENTER
- PREC 3100 - BAGLEY ELEMENTARY SCHOOL
- PREC 3110 - OAKMONT CHAPEL PRESBYTERIAN
- PREC 3120 - ADAMSVILLE BAPTIST CHURCH
- PREC 3130 - SHADES CREST BAPTIST CHURCH
- PREC 3140 - VALLEY CREEK BAPTIST CHURCH
- PREC 3150 - UNION HILL BAPTIST CHURCH
- PREC 3170 - ALLIANCE COMMUNITY CENTER
- PREC 3180 - CORNER SCHOOL
- PREC 3200 - MAURICE L. WEST COMMUNITY
- PREC 3220 - EZRA BAPTIST CHURCH
- PREC 3240 - SYLVAN SPRINGS FIRST UNITED
- PREC 3250 - BESSEMER FIRE STATION #5
- PREC 3260 - WEST JEFFERSON RECREATION
- PREC 3270 - MUSCODA COMMUNITY CENTER
- PREC 3280 - BROOKSIDE COMMUNITY CENTER
- PREC 3285/4130 - WARRIOR STORM SHELTER
- PREC 3290 - MULGA TOWN HALL
- PREC 3300 - JOHNS COMMUNITY CENTER
- PREC 3310 - PARKWOOD CHURCH OF GOD
- PREC 3320 - MAYTOWN BAPTIST CHURCH
- PREC 3330 - FIRST BAPT CHURCH BOOKER
- PREC 4005 - GARDENDALE FIRST BAPTIST
- PREC 4010 - GARDENDALE CIVIC CENTER
- PREC 4015 - GARDENDALE MT. VERNON UNITED
- PREC 4020 - TRUSSVILLE FIRST BAPTIST
- PREC 4025 - TRUSSVILLE CIVIC CENTER
- PREC 4030 - GREATER GRACE MISSIONARY
- PREC 4040 - TRUSSVILLE CITY HALL
- PREC 4045 - FAITH COMMUNITY FELLOWSHIP
- PREC 4050 - CLAY COMMUNITY CENTER
- PREC 4070 - TARRANT CITY HALL
- PREC 4080 - NORTH PARK BAPTIST CHURCH
- PREC 4090 - FULTONDALE FIRST BAPTIST
- PREC 4100 - MOUNTAIN VIEW BAPTIST CHURCH
- PREC 4110 - ROCK SCHOOL CENTER
- PREC 4120 - LIFE CHURCH
- PREC 4125 - HOPE COMMUNITY CHURCH OF
- PREC 4140 - LEEDS CIVIC CENTER
- PREC 4150 - PALMERDALE UNITED METHODIST
- PREC 4170 - KIMBERLY UNITED METHODIST
- PREC 4180 - BRADFORD SANCTUARY OF PRAISE
- PREC 4190 - THE CHURCH AT GRANTS MILL
- PREC 4200 - FULTONDALE SENIOR CITIZENS
- PREC 4210 - MORRIS SENIOR CITIZENS
- PREC 4220 - IRONDALE SENIOR CITIZENS
- PREC 4230 - GUIDING LIGHT CHURCH
- PREC 4240 - IRONDALE CITY HALL
- PREC 4250 - TRAFFORD CITY HALL
- PREC 5005 - BIRMINGHAM FIRST SDA CHURCH
- PREC 5010 - HOOVER PARK & RECREATION
- PREC 5015 - HOOVER SENIOR CENTER
- PREC 5020 - VESTAVIA HILLS UNITED
- PREC 5030 - SHADES MOUNTAIN COMMUNITY
- PREC 5035 - FULLNESS CHRISTIAN
- PREC 5040 - METROPOLITAN CHURCH OF GOD
- PREC 5050 - HOMEWOOD PUBLIC LIBRARY
- PREC 5060 - SAINT PETER THE APOSTLE
- PREC 5070 - CAHABA HEIGHTS BAPTIST
- PREC 5080 - BROOKWOOD BAPTIST CHURCH
- PREC 5090 - LEEDS FIRST UNITED
- PREC 5100 - BLUFF PARK UNITED METHODIST
- PREC 5110 - MOUNTAIN BROOK CITY HALL
- PREC 5120 - SHADES MOUNTAIN BAPTIST
- PREC 5130 - MOUNTAIN BROOK COMMUNITY
- PREC 5140 - THE CHURCH AT LIBERTY PARK
- PREC 5160 - SAINT THOMAS EPISCOPAL
- PREC 5170 - EDGEWOOD ELEMENTARY SCHOOL
- PREC 5180 - SAINT LUKE'S EPISCOPAL
- PREC 5190 - CHEROKEE BEND ELEMENTARY
- PREC 5200 - MOUNTAINTOP COMMUNITY CHURCH
- PREC 5220 - VESTAVIA CITY HALL
- PREC 5230 - HOOVER PUBLIC LIBRARY
- PREC 5240 - SHADES CAHABA ELEMENTARY
- PREC 5250 - CHURCH OF THE HIGHLANDS
- PREC 5260 - CANTERBURY UNITED METHODIST
- PREC 5280 - BIRMINGHAM BOTANICAL GARDENS

Disclaimer: Any use of this data shall be at the sole risk of the person or entity using it. Jefferson County makes no warranty, expressed or implied, as to the accuracy of the information represented herein. This data shall be accepted, AS IS, WITH ALL FAULTS. Any person, entity, or company that makes use of this data shall hold harmless Jefferson County, its elected officials, employees, and agents from and against any claim, damage, loss, action, cause of action, or liability arising from the use of this GIS product.